

**FL2103D JA8**  
**Vanity, CEC Listed**



**Features**

**Housing**

Die-formed Cold-rolled Steel  
 Finish Option: -62 Satin Nickel, -30 Oil Rubbed Bronze, -06 White

**Optical**

Shade: High Transmission Acrylic Create Excellent Light Distribution and Uniformity

**Electrical**

LED Driver: 120V ~ 277V, 0 ~ 10V Dimming Type  
 Min. Dimming Level: 3%  
 High Power Factor ( > 0.98), Low THD ( < 10%)

**Lamp**

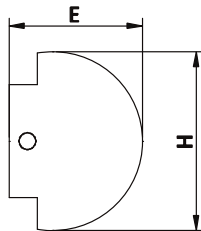
LED Type: Built-in (Color Temperature Option – 3500K, 4000K)  
 LM80, TM21 : 60,000 hours Rating  
 LED Rated Life: > 36000 hours  
 LED CRI > 90 per JA8 Standard  
 Flicker Free: Meets JA10 Standard

**Certifications**

ETL/cETL Listed, Energy Star, CEC Listed

**Warranty**

5 Years Warranty on Driver and LED Module



**LED Type**

Model	Input Voltage	Input Wattage	LED CT / CRI	Lumen (TYP)	CRI	Finish	Dimension (L x W X H)	Energy Star
FL2103D-3000K JA8	120V - 277V	24W	3000K	1980	>90	Satin Nickel	24.5" x 5.7" x 4.5"	Yes