

Direct Wire T8 LED Tube

LED Tube



Features

The Bypass LED T8 Lamps have been designed and Engineered for Demanding Commercial Applications.

Housing

Coated Glass Tube with Aluminum Extrusion Structure

Electrical

Easy Re-trofit for Shunted & non-Shunted Lamp Socket
 Input Voltage at Double Ends or Single End
 Bypass Double-end Connection Minimizes Installation Cost

Optical

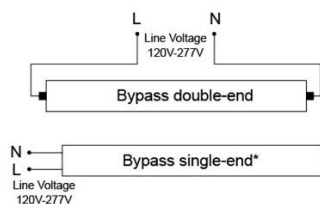
PET Coated Tubes are NSF Rated for Shatter Protection in Food Preparation Areas
 The Coated Glass Diffusing Tube Produce 325° of Evenly Diffused Light

Certification

UL/cUL Listed, DLC Listed

Warranty

5 Years Warranty



*For none shunted sockets

Direct Wire T8 LED Tubes

Model	Input Voltage	Tube Wattage	Power Factor	THD	CRI	Initial Lumen	Efficacy (lm/w)	Dimension (L x OD)	DLC
T8-48T-12W-DE-XXY	120V ~ 277V	12W	> 0.9	20%	> 80	1800	143	48.0" x 1.3"	Yes
T8-48T-14W-DE-XXY	120V ~ 277V	14W	> 0.9	22%	> 80	1900	131	48.0" x 1.3"	Yes
T8-48T-17W-DE-XXY	120V ~ 277V	17W	> 0.9	22%	> 80	2400	140	48.0" x 1.3"	Yes

Color Temperature Option (-XXY): 3000K (-830), 3500K (-835), 4000K (-840) and 5000K (-850)