

# Direct Wire T8 LED Tube

## LED Tube



### Features

#### Housing

Aluminum Extrusion

#### Electrical

Easy Re-trofit for Shunted & non-Shunted Lamp Socket  
 Input Voltage at Double Ends or Single End

#### Lamp

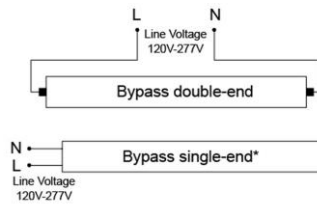
True Color Temperature Option 3000K, 3500K, 4000K and 5000K

#### Certification

UL/cUL Listed

#### Warranty

5 Years Warranty



### Direct Wire T8 LED Tubes

Model	Input Voltage	Tube Wattage	CRI	Lumen (typ)	Dimension (L x OD)	DLC
T8-48T-12W-DE-8xx	120V ~ 277V	12W	> 80	1800	48.0" x 1.3"	Yes
T8-48T-14W-DE-8xx	120V ~ 277V	14W	> 80	1900	48.0" x 1.3"	Yes
T8-48T-17W-DE-8xx	120V ~ 277V	17W	> 80	2400	48.0" x 1.3"	Yes